

DIY WORM FARM



Ask your greengrocer for these



**2 broccoli boxes
and 1 lid**

Step 1 Top box (the Worms' living quarters)



**Punch holes using a
screwdriver into the bottom
of ONE of the boxes**



**Line base with shadecloth or
flywire cut to measure**



Add 1-2cm layer of small stones over shade cloth



Add another piece of shade cloth over the stones

Step 2 Bottom Box – Juice Collection

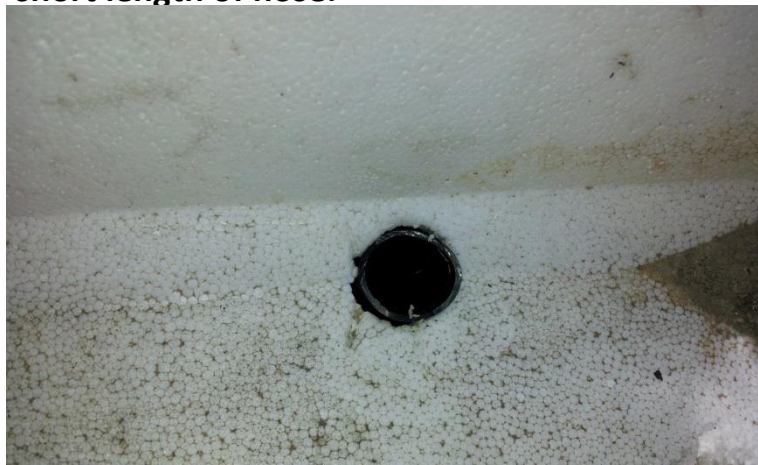


Measure and mark where to cut. Aim for a lower drainage box, approx. 15cm deep.





Use a screwdriver to make a hole in the middle of the base of one of the short sides. Insert a short length of hose.



Make the hose sit flush with the inside base. Secure in place with a silicone gun.



Your worm farm is now ready for bedding and then some WORMS!